

The Bourne Show

CHILDREN'S 'DEEP IN THE JUNGLE' THEMED CLASSES

Children's Classes aged 0-11 years

Entry form on reverse

Marquee open for viewing of all
the exhibits 1.30 - 4.15pm
on the day of the show

Entry form to be delivered to
the Marquee Secretary by
6pm Wednesday 2nd July 2025



SAT
5 JULY
2025



12.30
- 5PM
BOURNE
GREEN



CHILDREN'S CLASSES

*Deep in the Jungle – Lions, Elephants, Giraffes...
let your imagination run wild!*

- A** A named Jungle animal, made from fruit & vegetables
- B** A mini rainforest in a jar, made with flowers & grasses
- C** 2 Tropical fruit skewers
- D** 3 biscuits (can be bought) decorated with a Tropical theme
- E** Banana & Oat Muffins – following this recipe / exhibit favourite 4:
Ingredients: 200g plain flour, 100g porridge oats, 1 tsp baking powder, 1 tsp ground cinnamon, 100g soft light brown sugar, 2 eggs - beaten, 5 tbsp Olive Oil, 1 tsp vanilla extract, 2-4 ripe bananas – mashed, 200ml milk.

Method

1. Preheat the oven to 200C/400F/Gas 6. Line 12 holes of a muffin tin with paper cases.
2. In a large bowl, stir together flour, oats, baking powder, sugar and cinnamon.
3. In a separate bowl beat the eggs with the oil, milk & vanilla extract.
4. Add this to the dry ingredients, along with the mashed banana. Mix together quickly, being careful not to over mix.
5. Spoon into the paper cases and bake for 15 minutes, or until the muffins are risen & golden.

F Jungle drawing or painting (A3 max)

G In your best handwriting, a copy of the poem below (A4 max).

Decorate if you wish:

Jungle

A twig cracks,

The tiger roars,

One leaf flutters,

A parrot soars.

The air is creamy,

The moon is white,

The jungle sings,

On a perfect night

H Sock or stocking snake

I A Jungle Animal mask

J Jungle animal made from junk / recycling (no larger than 30cm wide by 30cm deep – height optional)

Entries must be the child's own work

Entries to the marquee 5th July 2025: 7 – 9.45am

Collection of entries: 4.15 - 4.45pm

Visit thebourneshow.com for extra copies of the schedule and more details



Exhibits must be displayed in the marquee
 by 9.45am on the day of the show: 5th July 2025
 Please note we are unable to accept any entries, for
 judging, after this time

PRIZES

FIRST £2

SECOND £1

THIRD..... 50P

Shields will be awarded to children winning the most points in each age group. Points are awarded as follows for each class: First = 4 points; Second = 3 points; Third = 2 points; Highly Commended = 1 point

Any questions regarding entries please contact:
 Catherine Muggerridge 07790 009753 or
 Jenny Rogers 07725912753

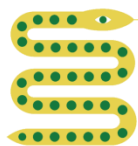
Full Schedule of classes for Mums, Dads & other family members is available on our website

thebourneshow.com

f Follow us, tag us 

@bourneshow #bourneshow

Share your creativity



CHILDREN'S CLASSES ENTRY FORM

Additional forms available on our website thebourneshow.com

Name:.....

Age:

Address:.....

Telephone:.....

Email Address:

Entries: (please tick)

Class	Under 5	6 - 8 yrs	9 - 11yrs
A			
B			
C			
D			
E			
F			
G			
H			
I			
J			

There are 10 different classes for each age group. You may only enter one exhibit in any one class, but you may enter as many classes as you like. **All children's entries are free.**

Kid's Entries - 3 age groups: 5 & under, 6 - 8 years, 9 - 11 years

Completed forms (NOT EXHIBITS) to:

Catherine Muggeridge, 30 Lodge Hill Road GU10 3QW or
Jenny Rogers, Briar Cottage, 27 Dene Lane GU10 3PW
by 6pm on Wednesday 2nd July

Exhibits must be displayed in the marquee **by 9.45am** on the morning of the show: 5th July 2025

Thanks to our main sponsors who are proudly supporting our show:



curchods.com



www.viablepower.co.uk