

# The Bourne Show

## ADULT SCHEDULE

Including children 12+ years & Teen classes  
(Children's Classes aged 0-11 years on a separate programme)

Entry form on the last page of schedule

Marquee open for viewing of all  
the exhibits 1.30 - 4.15pm

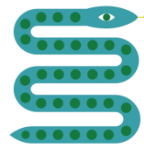
All exhibits must be removed between 4.15 - 4.45pm or be  
forfeited

Entry form to be delivered to  
the Marquee Secretary by  
6pm Wednesday 2<sup>nd</sup> July 2025



**12.30  
- 5PM**  
BOURNE  
GREEN

SAT  
5 JULY  
2025



# WELCOME TO YOUR SHOW

Thanks to our main sponsors who are proudly supporting our show:



Estate Agent Experts on your  
door step  
[curchods.com](http://curchods.com)



Helping you to save money and  
reduce your carbon footprint  
[www.viablepower.co.uk](http://www.viablepower.co.uk)

With around 80 different classes, there's something for everyone so why not take part. Whether you're proud of your **jam**, overjoyed with your **blooming potted plant** or just ultra-competitive with **Victoria sponges**, please join in. We even have classes for **abnormal fruit** and **sizable veg**, as well as the chance to win a cup for the best **photograph**.

As you would expect, judging is taken seriously, with some of our judges having the privilege of judging on a national basis. We provide the judges with a calm and peaceful atmosphere in the marquee for the judging, during which they cannot be disturbed. It is for this reason that **no entries are accepted after 9.45am** and that public entry to the marquee is not possible during the judging process.

\*\*\*\*\*

## BOURNE SHOW PRIVACY STATEMENT

By entering the arts, crafts and produce classes at the Bourne Show, you are giving us Personally Identifiable Information (PII), including your name, address, contact details etc. and are giving us explicit permission to use and process that information for the purposes of show administration, for contacting you regarding current and future entries and to provide you with further information. Only your name as an entrant will be shared with others, including being shown on our website, if you are an award winner.

The Bourne Show Committee takes its personal data responsibilities seriously. Information about you will be stored securely and used only for the stated purposes for which you gave us permission. If you have any questions regarding the use of your information, right of access or to change or remove your details from our databases, please contact the Bourne Show at: [hello@thebourneshow.com](mailto:hello@thebourneshow.com)

Adult Schedule – The Bourne Show 2025  
[www.thebourneshow.com](http://www.thebourneshow.com) @bourneshow  

## SECTION 1 - VEGETABLES AND FRUIT

Classes marked \* one variety only.

The naming of fruit and vegetables would be appreciated as it adds interest for other entrants and visitors

- 1\*** 6 pea pods – any type.
- 2\*** 3 spring onions, roots attached
- 3\*** 3 potatoes
- 4** Heaviest courgette / marrow, named and weighed
- 5\*** 6 runner beans
- 6\*** 4 carrots, tops trimmed to 8cm
- 7\*** 3 chillis
- 8** A bunch of spinach or swiss chard, in a pot of water
- 9** 1 garlic bulb
- 10** Any freak vegetable (1 only)
- 11** Any other vegetable not listed above
- 12\*** 6 strawberries
- 13\*** Any other berries, 6 (stalks to remain where appropriate)
- 14** A tropical fruit, includes citrus (1 only)
- 15\*** 5 sticks of rhubarb with approx. 10cm (4") of leaf blade, base pulled not cut
- 16** Any freak fruit (1 only)
- 17\*** 4 tomatoes – single variety, to be named
- 18** Any other fruit not listed above
- 19** A container of cut herbs in water (4 kinds, 1 of each – not in flower)

*Morris cup to be awarded to the exhibitor gaining most points in Section 1  
NEW Farnham Gardening Society cup is awarded to judges' favourite in  
Section 1*

## SECTION 2 – FLOWERS

For the interest of other entrants and visitors, it would be appreciated if varieties could be named.

- 20<sup>^</sup>** 'Deep in the Jungle' Flower arrangement, accessories may be used. No larger than 30cm wide, 30cm deep, height optional. No restrictions on the source of the foliage
- 21** A vase of garden flowers (at least 3 kinds, 3 stems of each)
- 22** Annual sweet peas – 6 stems
- 23** Cluster flowered rose (Floribunda, named) – 1 spray
- 24** 1 stem of Lupin, named variety
- 25** A small planted tub, no larger than 30 cm
- 26\*** Hybrid tea rose, named – one or more stems
- 27** Specimen bloom of any flower, 1 bloom
- 28#** A named foliage pot plant
- 29#** A named pot plant in bloom
- 30** A vase of mixed ornamental foliage, max width 45 cm
- 31** Succulent or cactus
- 32** Vase of 3 Geraniums or Pelargoniums
- 33** 5 pansies or violas, mixed or one variety
- 34<sup>~</sup>** 1 Stem of Delphinium/Hollyhock

**#** Pot not to exceed 18 cm (7") and must have been owned by the entrant for a minimum of 6 months

**^** *Mitchell cup will be awarded to the first prize winner of this class*

**\*** *Ostrer Rose Bowl awarded to the first prize winner of this class*

**~** *Ron Watts Memorial Plate awarded to the first prize winner of this class*

*Richards cup awarded to the exhibitor gaining most points in Section2*

*Judges cup awarded to judges' favourite in Section 2*

## SECTION 3 – DOMESTIC

All items to be covered. Jars to be covered with a wax disc & cellophane or twist top, be clear glass with no trademarks & approx. 1lb (454g). Label and date jars. No producer identity to be shown.

**35** Gluten Free bake

**36** Jar of Marmalade

**37** Jar of Chutney (at least 3 months old)

**38** Jar of any fruit Jam

**39** Jar of Jelly

**40** Jar of Tropical Curd

**41** A Loaf of Tiger Bread (1lb loaf – machine made dough accepted)

**42** Pineapple Upside-Down Cake, following the recipe below:

**Ingredients:** 425g tin of pineapple rings in juice, 7 glace cherries, 50g light soft brown sugar, 150g softened butter, 100g golden caster sugar, 2 eggs, 1 tsp vanilla extract, 100g self-raising flour, 1 tsp baking powder.

### Method

1. Heat the oven to 180C/160C fan/gas 4
  2. Beat 50g butter and 50g light soft brown sugar together until creamy. Spread this over the base & a quarter of the way up the sides of a 20cm round cake tin.
  3. Arrange 7 pineapple rings on top (reserving the syrup), then place the glace cherries in the centre of the rings.
  4. In a bowl, whisk 100g softened butter, 100g golden caster sugar, 100g self-raising flour, 1 tsp baking powder, 1 tsp vanilla extract, 2 eggs and 2 tbsp of the pineapple syrup - beat to a soft consistency. Carefully spoon this into the tin, on top of the pineapple and smooth so that is it level.
  5. Bake for 35 mins, or until risen, golden brown.
  6. Leave the cake to cool in the tin for 5 minutes, then carefully, turn out onto a serving plate, pineapple side up. Please display the cake, pineapple side up.
- 43** Victoria Sandwich with raspberry jam filling, no cream, 3 egg mixture
- 44** Gingerbread Loaf cake
- 45** 'Deep in the Jungle' themed Novelty Cake Decoration (not necessarily on a cake)
- 46** A bottle of home-made cordial or fruit drink (non-alcoholic)
- 47** A bottle of home-made wine or liqueur

*Bourne Business cup awarded to the exhibitor gaining most points in Section 3*  
*Juliet Bowell cup awarded for the exhibitors gaining most points for preserves*  
*Judges cup is awarded to judges' favourite of Section 3*

## SECTION 4 – ART AND CRAFT

For all classes in Section 4: Please state, on the entry form, the size of the work entered, unless this has already been specified.

- 48** A painting using oils
- 49** A painting using watercolour
- 50** A painting using pastels
- 51** An example of printmaking
- 52** A drawing in any medium
- 53<sup>^</sup>** Photograph – theme 'Tropical Moment'
- 54** Any other artwork not covered in the above
- 55'** Any teen artwork, entrants must be between 12-16yrs
- 56** An original article of patchwork/quilting – machine or hand sewn
- 57** A piece of pottery/ceramic
- 58** A piece of craftwork made from a kit
- 59** A hand-knitted or crocheted article
- 60** A piece of cross-stitch, embroidery or tapestry
- 61** A hand-made greetings card with a Jungle theme
- 62** A hand-made toy
- 63\*** Any other craft work not covered in other classes
- 64** Upcycling – a craft item made by using recycled or repurposed material
- 65'** Any teen craft, entrants must be between 12-16yrs

*\* The Keighley plate will be awarded to the first prize winner of this class*

*<sup>^</sup>Bourne Committee Cup to be award to the first prize winner of this class*

*'A cup will be awarded to the first prize winner for both the Teen Artwork & Teen Craft class*

*The Peggy Goebel Cup to be awarded to the exhibitor gaining most points in Section 4*

*Judges cup for art is awarded to judges' favourite art entry in Section 4*

*Judges cup for craft is awarded to judges' favourite craft entry in Section 4*

# RULES

All entry forms must be sent to the Marquee Secretary, Catherine Muggeridge (30 Lodge Hill Road, Lower Bourne, GU10 3QW) or Jenny Rogers (Briar Cottage, 27 Dene Lane, Lower Bourne, GU10 3PW) by 6pm Wed 2<sup>nd</sup> July 2025.

Exhibits may be staged between **07:00 – 09.45** on the day of the Show. Please note we are **unable to accept exhibits for judging after 09:45**

Persons showing an article for competition not grown or made by themselves will be disqualified, unless specifically stated in the schedule.

All vegetables, fruit and flowers are judged by RHS standards.

Not more than one entry in each class per person is permitted.

No exhibits to have been previously shown at the Bourne Show.

Vases, plates etc to be provided by exhibitors.

Polished jam jars gain points, with no trade names visible.

Domestic produce must be dated, or it will not be judged.

Exhibits to be named where possible, but no entrant name to be visible.

Judging will commence at 10:00 - Judges decisions are final.

You may not enter the marquee whilst judging is taking place or before 13:30 on the day.

Prize money per class: First = £2, Second = £1, Third = 50p.

Points are awarded as follows for cups/awards where more than one class contributes to the cup/award: First = 4 points; Second = 3 points; Third = 2 points; Highly Commended = 1 point.

**All exhibits must be removed between 16:15 -16:45 or be forfeited.**

The committee cannot be responsible for uncollected items.

For more information or hints & tips visit our website: **[www.thebourneshow.com](http://www.thebourneshow.com)** or contact Marquee Secretary Catherine Muggeridge (07790 009753) or Jenny Rogers (07725 912753) or follow us on Facebook or Instagram

# THE BOURNE SHOW ENTRY FORM

## SAT 5<sup>TH</sup> JULY 2025

### ADULT CLASSES (12 YRS+) & TEEN CLASSES (12-16YRS)

Additional forms available on our website [thebourneshow.com](http://thebourneshow.com)

I/We wish to enter for the following classes in the 2025 Bourne Show  
(ring the classes you wish to enter – 20p per entry, one entry per class, per person)

#### Section 1 – Vegetables & Fruit

1	2	3	4	5	6	7	8	9	10	11	12
13	14	15	16	17	18	19					

#### Section 2 – Flowers

20	21	22	23	24	25	26	27	28	29	30	31
32	33	34									

#### Section 3 – Domestic

35	36	37	38	39	40	41	42	43	44	45	46
47											

#### Section 4 – Art and Craft (please indicate size of finished work)

48	49	50	51	52	53	54	55	56	57	58	59
60	61	62	63	64	65						

Amount enclosed .....

Name .....

Address .....

Tel .....

Email address .....

Children's entries on separate Children's Entry Form please

All entry forms must be sent to the Marquee Secretary:  
Catherine Muggeridge (30 Lodge Hill Road, Lower Bourne, GU10 3QW 07790 009753) or Jenny Rogers (Briar Cottage, 27 Dene Lane, Lower Bourne, GU10 3PW 07725 912753) by 6pm Wed 2<sup>nd</sup> July 2025.